

MATERIAL PALETTE

- 1

FIBRE CEMENT LAP SIDING, SMOOTH FINISH, IN ARCTIC WHITE WITH ALUMINIUM FLASHING, COLOUR MATCHED TO ARCTIC WHITE
- 2

FIBRE CEMENT LAP SIDING, WOOD GRAIN FINISH, IN IRON GREY WITH ALUMINIUM FLASHING, COLOUR MATCHED TO IRON GREY
- 3

VERTICAL BOARD & BATTEN SIDING, SMOOTH FINISH, IN ARCTIC WHITE WITH ALUMINIUM FLASHING, COLOUR MATCHED TO ARCTIC WHITE
- 4

VERTICAL BOARD & BATTEN SIDING, SMOOTH FINISH, IN BOOTHBAY BLUE WITH ALUMINIUM FLASHING, COLOUR MATCHED TO BOOTHBAY BLUE
- 5

VERTICAL BOARD & BATTEN SIDING, SMOOTH FINISH, IN ASHWOOD MOSS WITH ALUMINIUM FLASHING, COLOUR MATCHED TO ASHWOOD MOSS
- 6

VERTICAL BOARD & BATTEN SIDING, SMOOTH FINISH, IN GREY SLATE WITH ALUMINIUM FLASHING, COLOUR MATCHED TO GREY SLATE
- 7

CORRUGATED METAL ACCENT SIDING
- 8

CHAM CLAD 6" SIDING IN 'TOFINO' (REF. ELEVATIONS FOR ORIENTATION)
- 9

CHAM CLAD 6" SOFFIT IN 'TOFINO'
- 10

PICKETED GAUDDRAILS, ALUMINIUM FRAME, IN WHITE
- 11

FROSTED TEMPERED GLASS GUARDRAIL WITH ALUMINIUM FRAME, IN WHITE
- 12

ALUMINIUM CAP AND TRIM FLASHING, IN GREY SLATE
- 13

FASCIA BOARD, IN GREY SLATE
- 14

VINYL FRAME WINDOW, IN WHITE
- 15

VINYL SWING DOOR IN WHITE WITH TEMPERED GLASS: PANEL AND SIDELIGHT
- 16

VINYL SWING DOOR IN IWHITE WITH TEMPERED GLASS PANEL
- 17

2 PANEL, VINYL, SLIDING TEMPERED GLASS DOOR, IN WHITE
- 18

OVERHEAD GARAGE DOOR, IN GREY SLATE
- 19

METAL SWING DOUBLE DOOR, COLOUR MATCHED TO ARCTIC WHITE
- 20

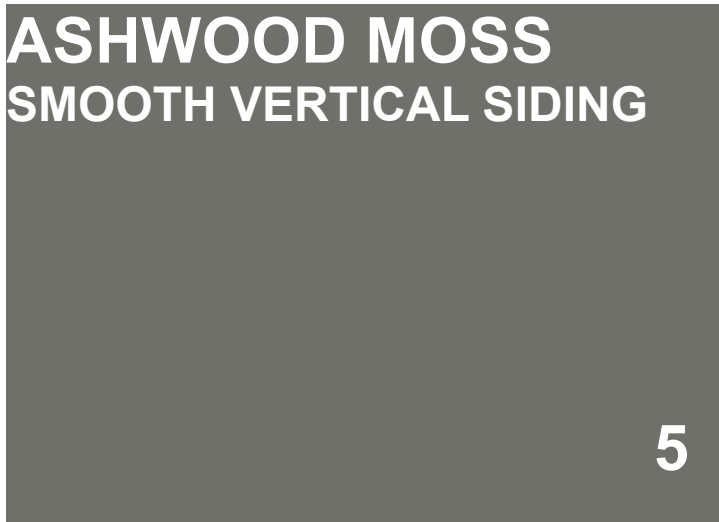
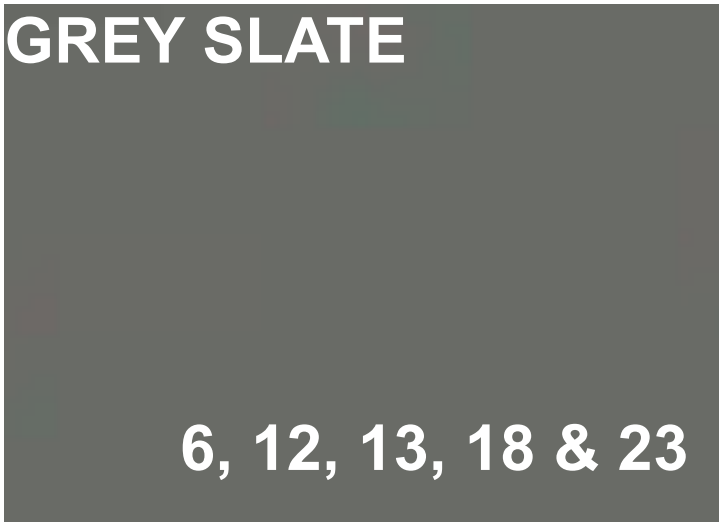
METAL SWING DOUBLE DOOR, COLOUR MATCHED TO IRON GREY
- 21

METAL SWING DOUBLE DOOR, COLOUR MATCHED TO BOOTHBAY BLUE
- 22

METAL SWING DOUBLE DOOR, COLOUR MATCHED TO ASHWOOD MOSS
- 23

WOOD TRIM PIECE, 3.5", COLOUR MATCHED TO GREY SLATE
- 24

SHINGLE ROOFING, IN ESTATE GREY

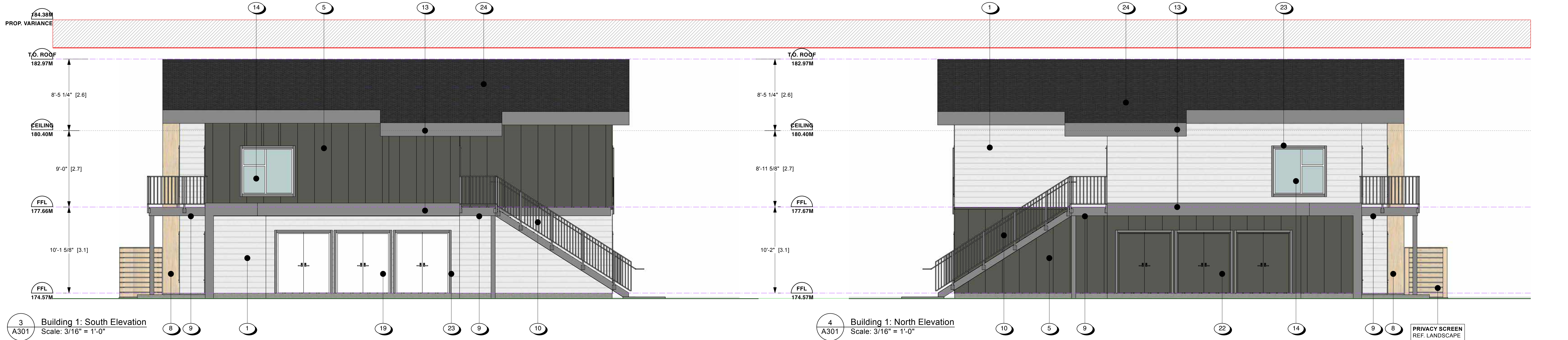
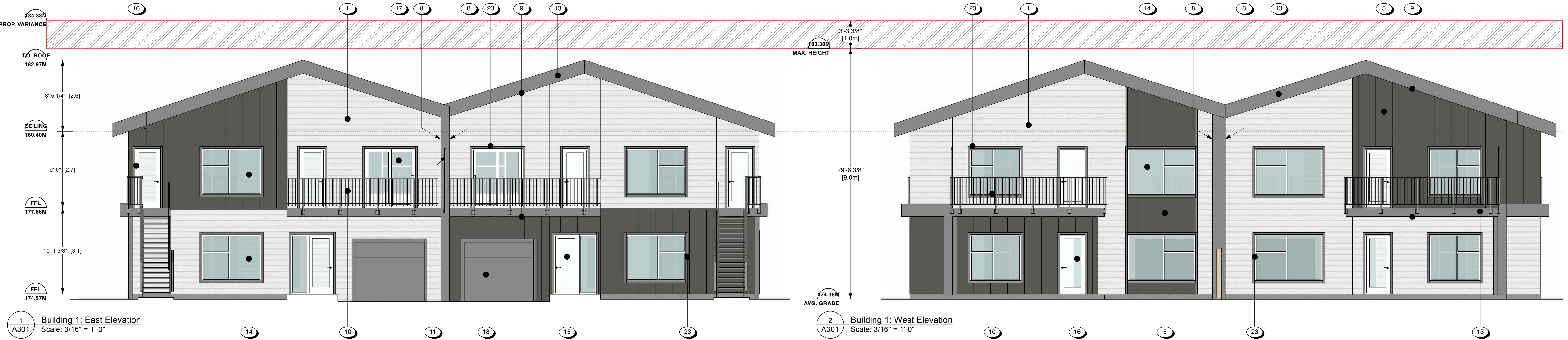


BUILDING 1

STYLE 3

6, 12, 13, 18 & 23

5



Mount Benson Developments
Nanaimo, B.C.
24JUL25

Lot 1 - 5420 Altavista Drive
ISSUE FOR DEVELOPMENT PERMIT

RECEIVED
DP1401
2025-OCT-03
Current Planning

Elevations: Building 1
A301
Scale as Noted



MATERIAL PALETTE

- 1

FIBRE CEMENT LAP SIDING, SMOOTH FINISH, IN ARCTIC WHITE WITH ALUMINIUM FLASHING, COLOUR MATCHED TO ARCTIC WHITE
- 2

FIBRE CEMENT LAP SIDING, WOOD GRAIN FINISH, IN IRON GREY WITH ALUMINIUM FLASHING, COLOUR MATCHED TO IRON GREY
- 3

VERTICAL BOARD & BATTEN SIDING, SMOOTH FINISH, IN ARCTIC WHITE WITH ALUMINIUM FLASHING, COLOUR MATCHED TO ARCTIC WHITE
- 4

VERTICAL BOARD & BATTEN SIDING, SMOOTH FINISH, IN BOOTHBAY BLUE WITH ALUMINIUM FLASHING, COLOUR MATCHED TO BOOTHBAY BLUE
- 5

VERTICAL BOARD & BATTEN SIDING, SMOOTH FINISH, IN ASHWOOD MOSS WITH ALUMINIUM FLASHING, COLOUR MATCHED TO ASHWOOD MOSS
- 6

VERTICAL BOARD & BATTEN SIDING, SMOOTH FINISH, IN GREY SLATE WITH ALUMINIUM FLASHING, COLOUR MATCHED TO GREY SLATE
- 7

CORRUGATED METAL ACCENT SIDING
- 8

CHAM CLAD 6" SIDING IN 'TOFINO' (REF. ELEVATIONS FOR ORIENTATION)
- 9

CHAM CLAD 6" SOFFIT IN 'TOFINO'
- 10

PICKETED GAUDDRAILS, ALUMINIUM FRAME, IN WHITE
- 11

FROSTED TEMPERED GLASS GUARDRAIL WITH ALUMINIUM FRAME, IN WHITE
- 12

ALUMINIUM CAP AND TRIM FLASHING, IN GREY SLATE
- 13

FASCIA BOARD, IN GREY SLATE
- 14

VINYL FRAME WINDOW, IN WHITE
- 15

VINYL SWING DOOR IN WHITE WITH TEMPERED GLASS: PANEL AND SIDELIGHT
- 16

VINYL SWING DOOR IN IWHITE WITH TEMPERED GLASS PANEL
- 17

2 PANEL, VINYL, SLIDING TEMPERED GLASS DOOR, IN WHITE
- 18

OVERHEAD GARAGE DOOR, IN GREY SLATE
- 19

METAL SWING DOUBLE DOOR, COLOUR MATCHED TO ARCTIC WHITE
- 20

METAL SWING DOUBLE DOOR, COLOUR MATCHED TO IRON GREY
- 21

METAL SWING DOUBLE DOOR, COLOUR MATCHED TO BOOTHBAY BLUE
- 22

METAL SWING DOUBLE DOOR, COLOUR MATCHED TO ASHWOOD MOSS
- 23

WOOD TRIM PIECE, 3.5", COLOUR MATCHED TO GREY SLATE
- 24

SHINGLE ROOFING, IN ESTATE GREY

TOFINO
SOFFIT, SIDING

8 & 9

GREY SLATE

6, 12, 13, 18 & 23

ARCTIC WHITE
LAP SIDING

1

BOOTHBAY BLUE
SMOOTH VERTICAL SIDING

4



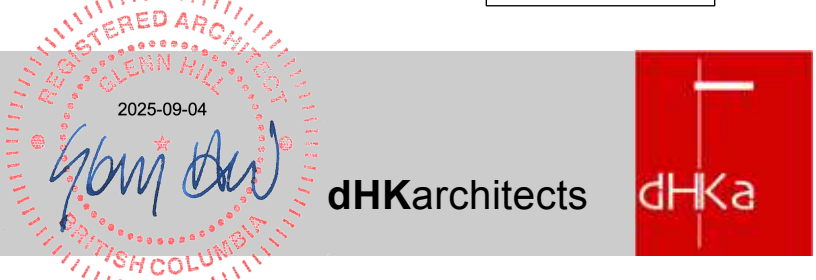
BUILDING 2

STYLE 2



RECEIVED
DP1401
2025-OCT-03
Current Planning

Elevations: Building 2
A302
Scale as Noted



Mount Benson Developments
Nanaimo, B.C.
24JUL25

Lot 1 - 5420 Altavista Drive
ISSUE FOR DEVELOPMENT PERMIT

MATERIAL PALETTE

- 1

FIBRE CEMENT LAP SIDING, SMOOTH FINISH, IN ARCTIC WHITE WITH ALUMINIUM FLASHING, COLOUR MATCHED TO ARCTIC WHITE
- 2

FIBRE CEMENT LAP SIDING, WOOD GRAIN FINISH, IN IRON GREY WITH ALUMINIUM FLASHING, COLOUR MATCHED TO IRON GREY
- 3

VERTICAL BOARD & BATTEN SIDING, SMOOTH FINISH, IN ARCTIC WHITE WITH ALUMINIUM FLASHING, COLOUR MATCHED TO ARCTIC WHITE
- 4

VERTICAL BOARD & BATTEN SIDING, SMOOTH FINISH, IN BOOTHBAY BLUE WITH ALUMINIUM FLASHING, COLOUR MATCHED TO BOOTHBAY BLUE
- 5

VERTICAL BOARD & BATTEN SIDING, SMOOTH FINISH, IN ASHWOOD MOSS WITH ALUMINIUM FLASHING, COLOUR MATCHED TO ASHWOOD MOSS
- 6

VERTICAL BOARD & BATTEN SIDING, SMOOTH FINISH, IN GREY SLATE WITH ALUMINIUM FLASHING, COLOUR MATCHED TO GREY SLATE
- 7

CORRUGATED METAL ACCENT SIDING
- 8

CHAM CLAD 6" SIDING IN 'TOFINO' (REF. ELEVATIONS FOR ORIENTATION)
- 9

CHAM CLAD 6" SOFFIT IN 'TOFINO'
- 10

PICKETED GAUDDRAILS, ALUMINIUM FRAME, IN WHITE
- 11

FROSTED TEMPERED GLASS GUARDRAIL WITH ALUMINIUM FRAME, IN WHITE
- 12

ALUMINIUM CAP AND TRIM FLASHING, IN GREY SLATE
- 13

FASCIA BOARD, IN GREY SLATE
- 14

VINYL FRAME WINDOW, IN WHITE
- 15

VINYL SWING DOOR IN WHITE WITH TEMPERED GLASS: PANEL AND SIDELIGHT
- 16

VINYL SWING DOOR IN IWHITE WITH TEMPERED GLASS PANEL
- 17

2 PANEL, VINYL, SLIDING TEMPERED GLASS DOOR, IN WHITE
- 18

OVERHEAD GARAGE DOOR, IN GREY SLATE
- 19

METAL SWING DOUBLE DOOR, COLOUR MATCHED TO ARCTIC WHITE
- 20

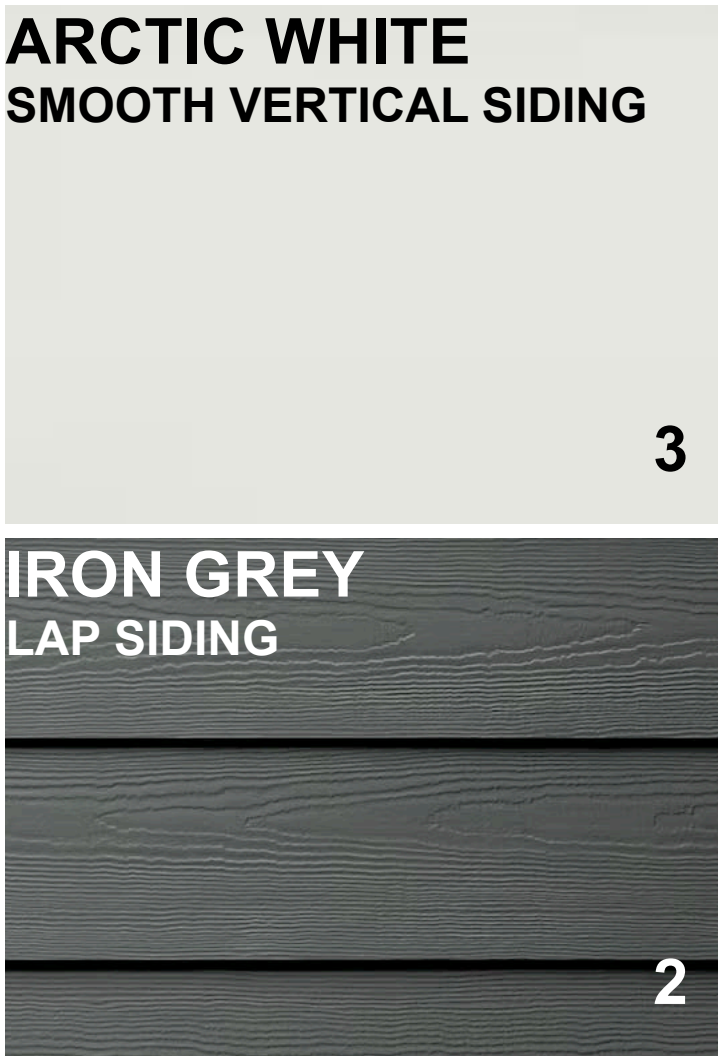
METAL SWING DOUBLE DOOR, COLOUR MATCHED TO IRON GREY
- 21

METAL SWING DOUBLE DOOR, COLOUR MATCHED TO BOOTHBAY BLUE
- 22

METAL SWING DOUBLE DOOR, COLOUR MATCHED TO ASHWOOD MOSS
- 23

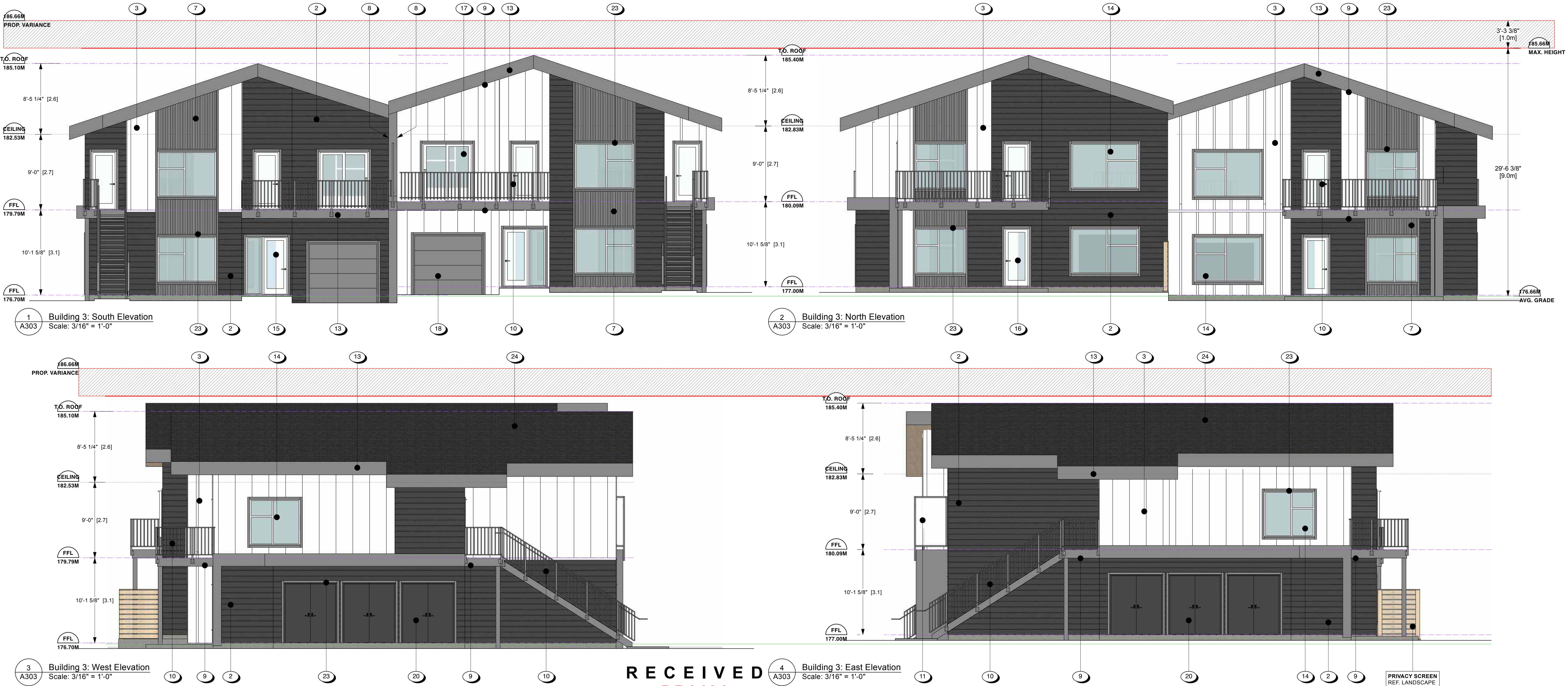
WOOD TRIM PIECE, 3.5", COLOUR MATCHED TO GREY SLATE
- 24

SHINGLE ROOFING, IN ESTATE GREY



BUILDING 3

STYLE 1



RECEIVED

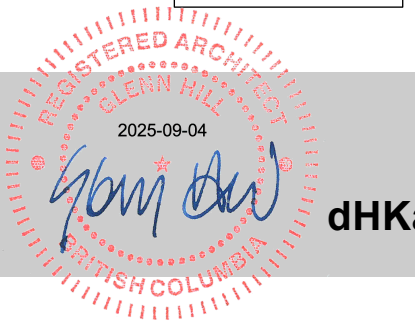
DP1401

2025-OCT-03

Current Planning

Elevations: Building 3

A303
Scale as Noted



dHKarchitects



Mount Benson Developments
Nanaimo, B.C.
24JUL25

Lot 1 - 5420 Altavista Drive
ISSUE FOR DEVELOPMENT PERMIT

MATERIAL PALETTE

- 1

FIBRE CEMENT LAP SIDING, SMOOTH FINISH, IN ARCTIC WHITE WITH ALUMINIUM FLASHING, COLOUR MATCHED TO ARCTIC WHITE
- 2

FIBRE CEMENT LAP SIDING, WOOD GRAIN FINISH, IN IRON GREY WITH ALUMINIUM FLASHING, COLOUR MATCHED TO IRON GREY
- 3

VERTICAL BOARD & BATTEN SIDING, SMOOTH FINISH, IN ARCTIC WHITE WITH ALUMINIUM FLASHING, COLOUR MATCHED TO ARCTIC WHITE
- 4

VERTICAL BOARD & BATTEN SIDING, SMOOTH FINISH, IN BOOTHBAY BLUE WITH ALUMINIUM FLASHING, COLOUR MATCHED TO BOOTHBAY BLUE
- 5

VERTICAL BOARD & BATTEN SIDING, SMOOTH FINISH, IN ASHWOOD MOSS WITH ALUMINIUM FLASHING, COLOUR MATCHED TO ASHWOOD MOSS
- 6

VERTICAL BOARD & BATTEN SIDING, SMOOTH FINISH, IN GREY SLATE WITH ALUMINIUM FLASHING, COLOUR MATCHED TO GREY SLATE
- 7

CORRUGATED METAL ACCENT SIDING
- 8

CHAM CLAD 6" SIDING IN 'TOFINO' (REF. ELEVATIONS FOR ORIENTATION)
- 9

CHAM CLAD 6" SOFFIT IN 'TOFINO'
- 10

PICKETED GAUDDRAILS, ALUMINIUM FRAME, IN WHITE
- 11

FROSTED TEMPERED GLASS GUARDRAIL WITH ALUMINIUM FRAME, IN WHITE
- 12

ALUMINIUM CAP AND TRIM FLASHING, IN GREY SLATE
- 13

FASCIA BOARD, IN GREY SLATE
- 14

VINYL FRAME WINDOW, IN WHITE
- 15

VINYL SWING DOOR IN WHITE WITH TEMPERED GLASS: PANEL AND SIDELIGHT
- 16

VINYL SWING DOOR IN IWHITE WITH TEMPERED GLASS PANEL
- 17

2 PANEL, VINYL, SLIDING TEMPERED GLASS DOOR, IN WHITE
- 18

OVERHEAD GARAGE DOOR, IN GREY SLATE
- 19

METAL SWING DOUBLE DOOR, COLOUR MATCHED TO ARCTIC WHITE
- 20

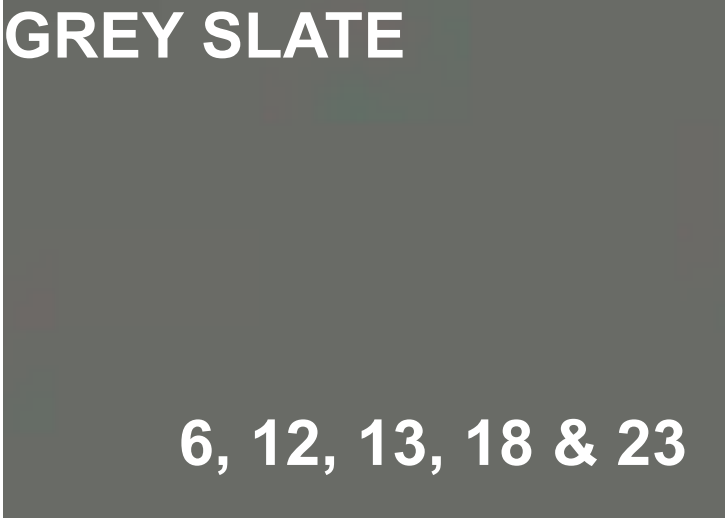
METAL SWING DOUBLE DOOR, COLOUR MATCHED TO IRON GREY
- 21

METAL SWING DOUBLE DOOR, COLOUR MATCHED TO BOOTHBAY BLUE
- 22

METAL SWING DOUBLE DOOR, COLOUR MATCHED TO ASHWOOD MOSS
- 23

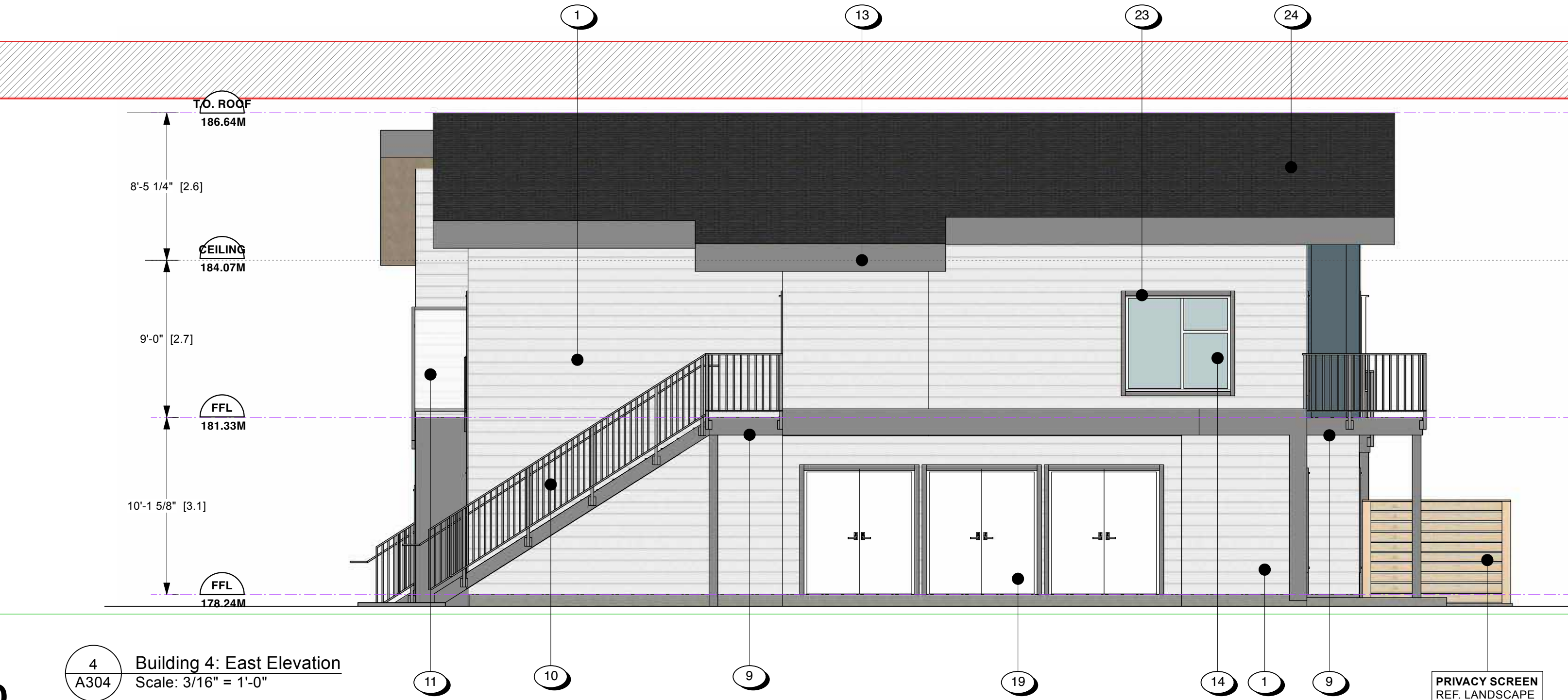
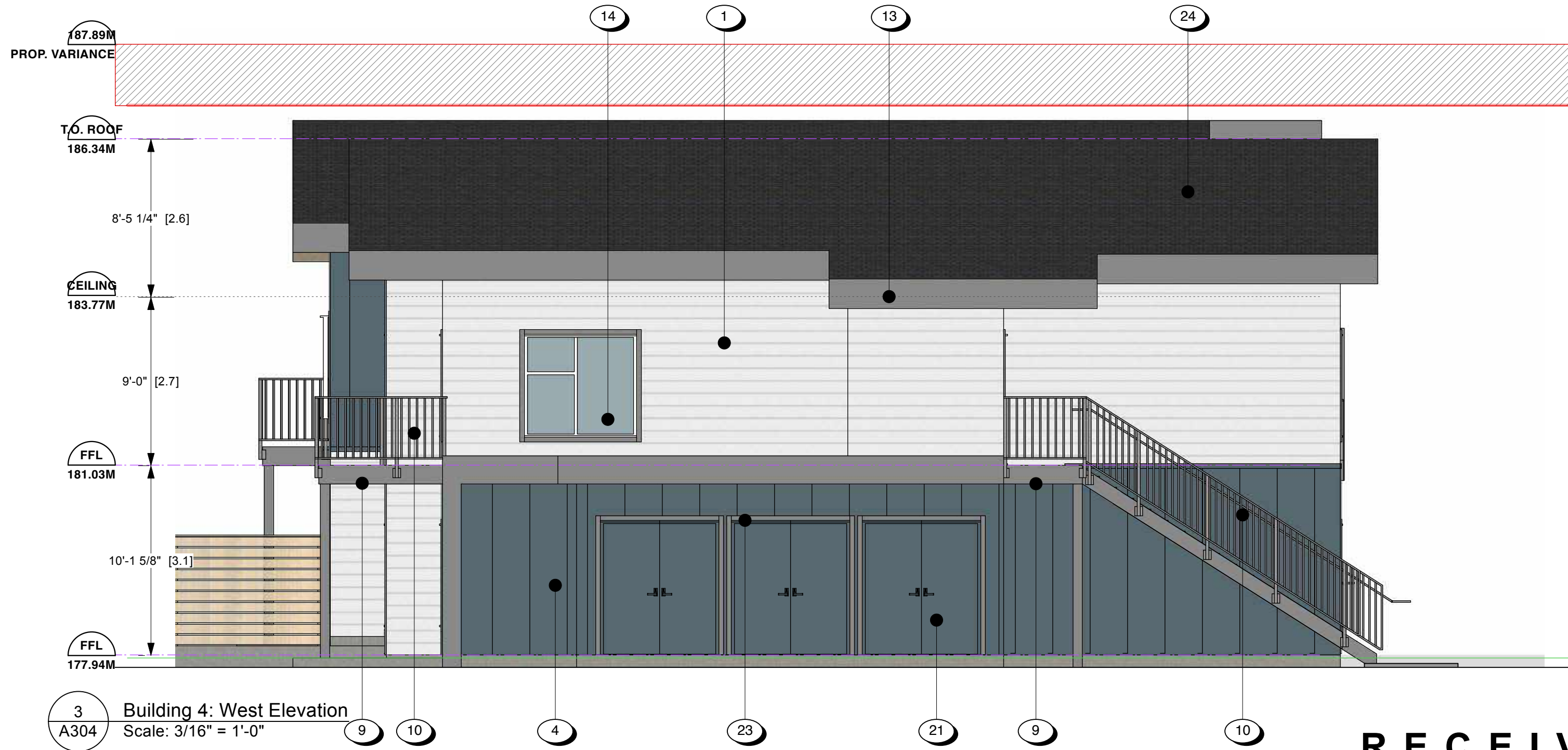
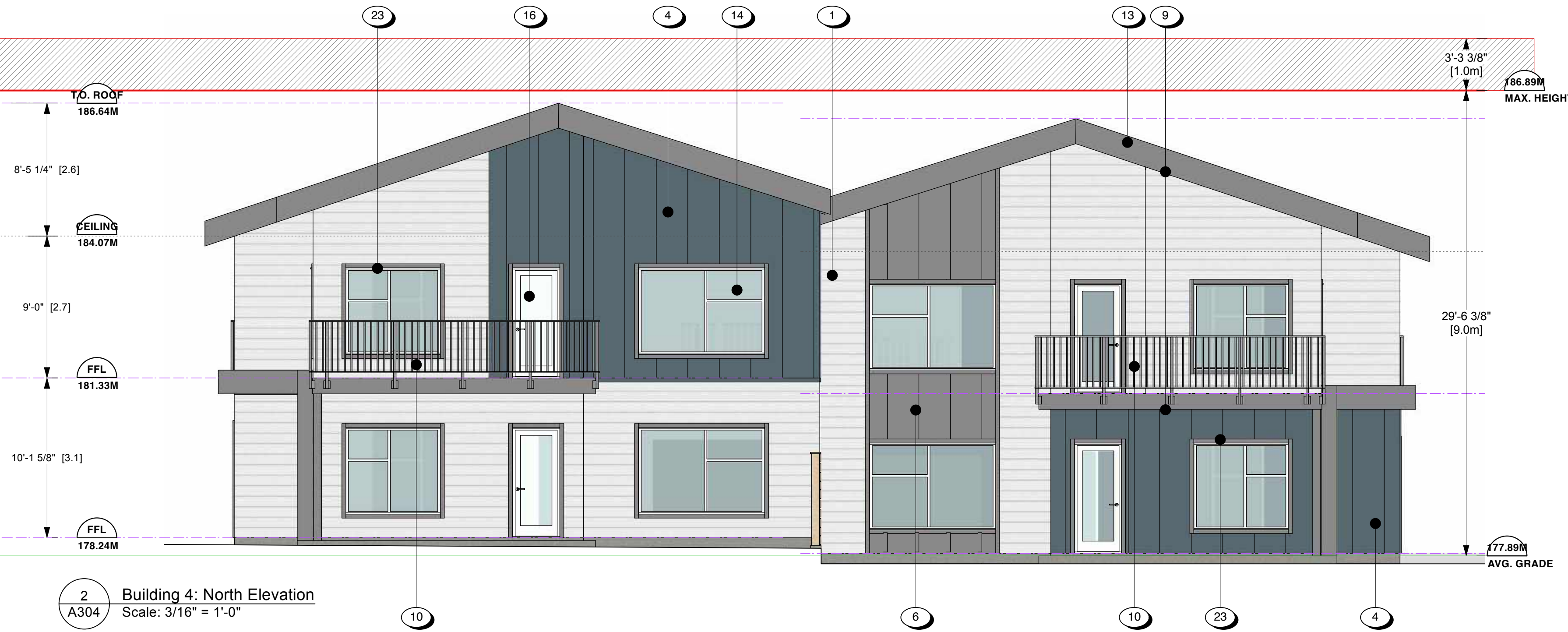
WOOD TRIM PIECE, 3.5", COLOUR MATCHED TO GREY SLATE
- 24

SHINGLE ROOFING, IN ESTATE GREY



BUILDING 4

STYLE 2



RECEIVED
DP1401
2025-OCT-03
Current Planning

Elevations: Building 4
A304
Scale as Noted



Mount Benson Developments
Nanaimo, B.C.
24JUL25

Lot 1 - 5420 Altavista Drive
ISSUE FOR DEVELOPMENT PERMIT

MATERIAL PALETTE

- 1

FIBRE CEMENT LAP SIDING, SMOOTH FINISH, IN ARCTIC WHITE WITH ALUMINIUM FLASHING, COLOUR MATCHED TO ARCTIC WHITE
- 2

FIBRE CEMENT LAP SIDING, WOOD GRAIN FINISH, IN IRON GREY WITH ALUMINIUM FLASHING, COLOUR MATCHED TO IRON GREY
- 3

VERTICAL BOARD & BATTEN SIDING, SMOOTH FINISH, IN ARCTIC WHITE WITH ALUMINIUM FLASHING, COLOUR MATCHED TO ARCTIC WHITE
- 4

VERTICAL BOARD & BATTEN SIDING, SMOOTH FINISH, IN BOOTHBAY BLUE WITH ALUMINIUM FLASHING, COLOUR MATCHED TO BOOTHBAY BLUE
- 5

VERTICAL BOARD & BATTEN SIDING, SMOOTH FINISH, IN ASHWOOD MOSS WITH ALUMINIUM FLASHING, COLOUR MATCHED TO ASHWOOD MOSS
- 6

VERTICAL BOARD & BATTEN SIDING, SMOOTH FINISH, IN GREY SLATE WITH ALUMINIUM FLASHING, COLOUR MATCHED TO GREY SLATE
- 7

CORRUGATED METAL ACCENT SIDING
- 8

CHAM CLAD 6" SIDING IN 'TOFINO' (REF. ELEVATIONS FOR ORIENTATION)
- 9

CHAM CLAD 6" SOFFIT IN 'TOFINO'
- 10

PICKETED GAUDDRAILS, ALUMINIUM FRAME, IN WHITE
- 11

FROSTED TEMPERED GLASS GUARDRAIL WITH ALUMINIUM FRAME, IN WHITE
- 12

ALUMINIUM CAP AND TRIM FLASHING, IN GREY SLATE
- 13

FASCIA BOARD, IN GREY SLATE
- 14

VINYL FRAME WINDOW, IN WHITE
- 15

VINYL SWING DOOR IN WHITE WITH TEMPERED GLASS: PANEL AND SIDELIGHT
- 16

VINYL SWING DOOR IN IWHITE WITH TEMPERED GLASS PANEL
- 17

2 PANEL, VINYL, SLIDING TEMPERED GLASS DOOR, IN WHITE
- 18

OVERHEAD GARAGE DOOR, IN GREY SLATE
- 19

METAL SWING DOUBLE DOOR, COLOUR MATCHED TO ARCTIC WHITE
- 20

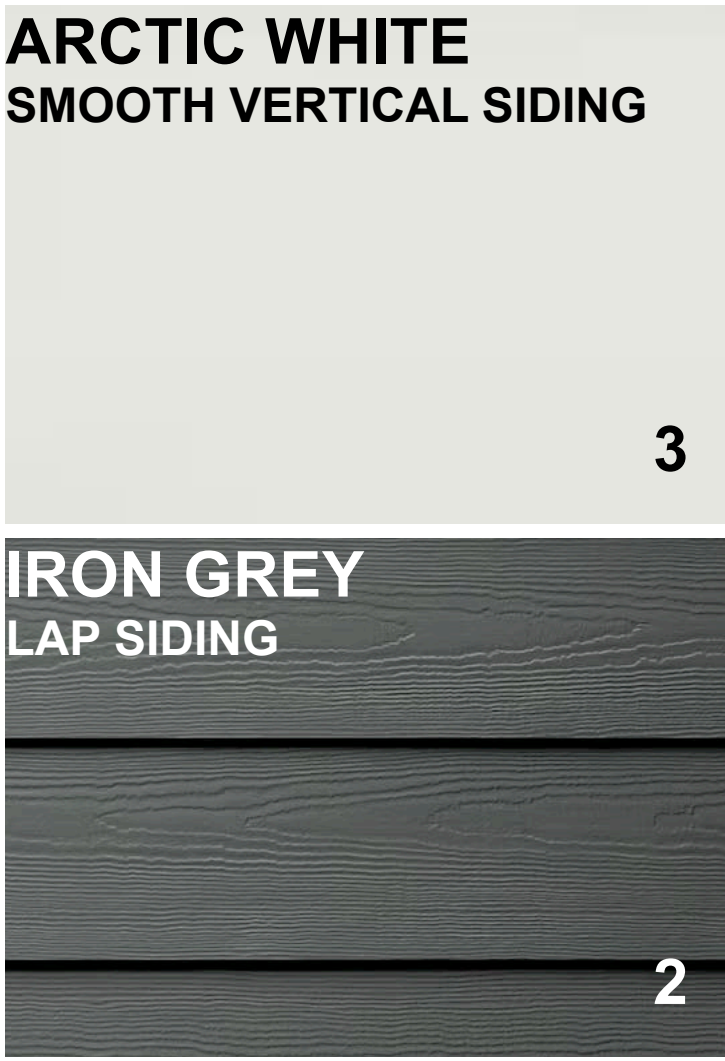
METAL SWING DOUBLE DOOR, COLOUR MATCHED TO IRON GREY
- 21

METAL SWING DOUBLE DOOR, COLOUR MATCHED TO BOOTHBAY BLUE
- 22

METAL SWING DOUBLE DOOR, COLOUR MATCHED TO ASHWOOD MOSS
- 23

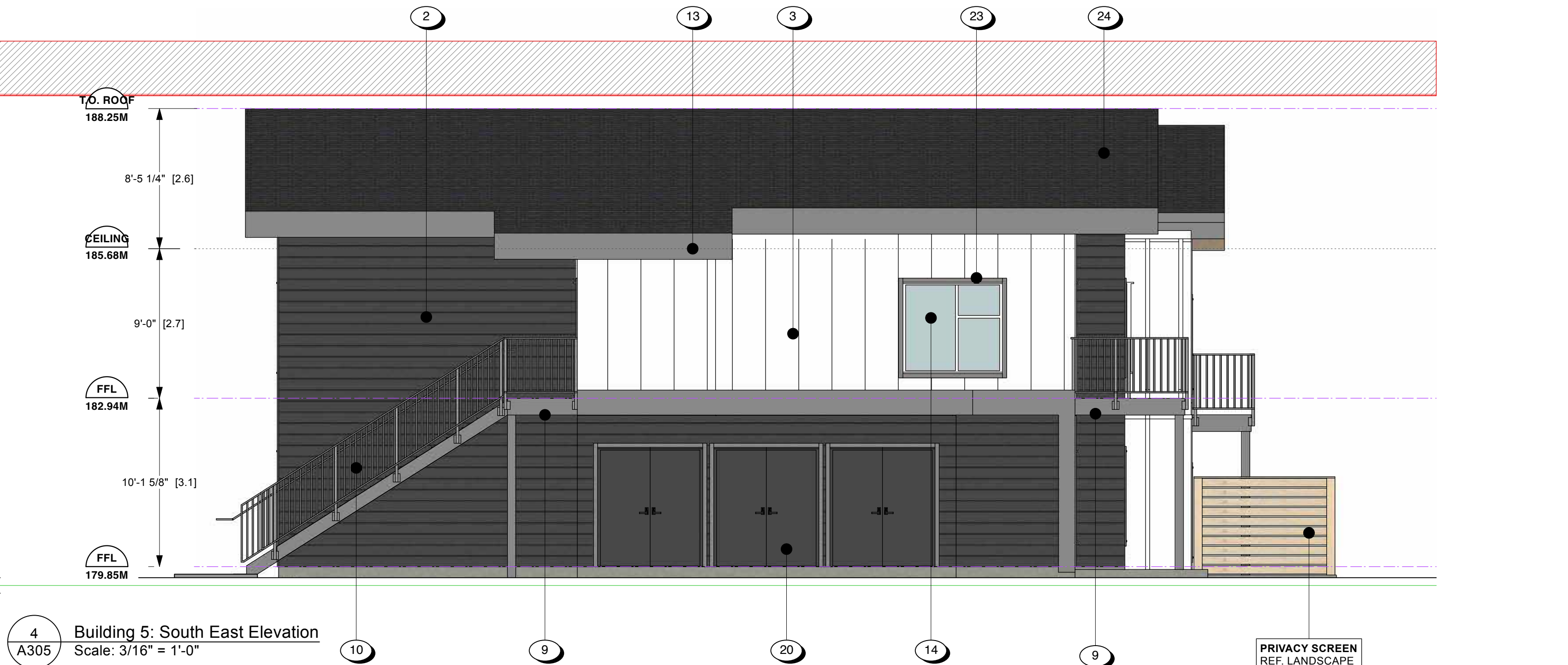
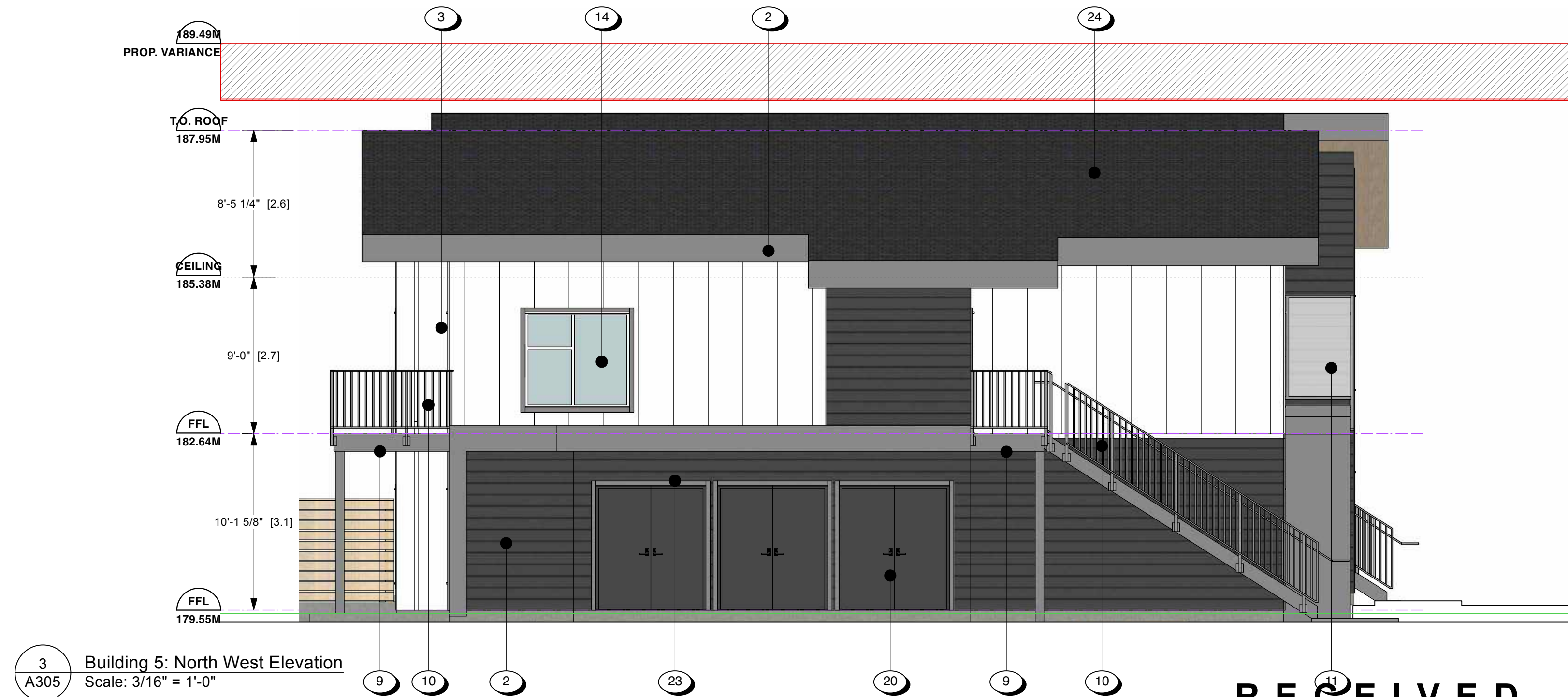
WOOD TRIM PIECE, 3.5", COLOUR MATCHED TO GREY SLATE
- 24

SHINGLE ROOFING, IN ESTATE GREY



BUILDING 5

STYLE 1



RECEIVED

DP1401

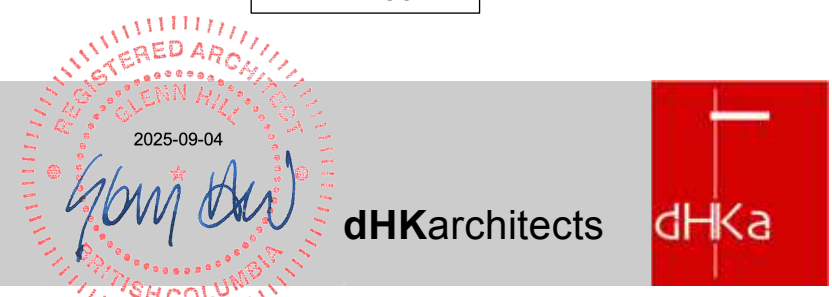
2025-OCT-03

Current Planning

Mount Benson Developments
Nanaimo, B.C.
24JUL25

Lot 1 - 5420 Altavista Drive
ISSUE FOR DEVELOPMENT PERMIT

Elevations: Building 5
A305
Scale as Noted



MATERIAL PALETTE

- 1

FIBRE CEMENT LAP SIDING, SMOOTH FINISH, IN ARCTIC WHITE WITH ALUMINIUM FLASHING, COLOUR MATCHED TO ARCTIC WHITE
- 2

FIBRE CEMENT LAP SIDING, WOOD GRAIN FINISH, IN IRON GREY WITH ALUMINIUM FLASHING, COLOUR MATCHED TO IRON GREY
- 3

VERTICAL BOARD & BATTEN SIDING, SMOOTH FINISH, IN ARCTIC WHITE WITH ALUMINIUM FLASHING, COLOUR MATCHED TO ARCTIC WHITE
- 4

VERTICAL BOARD & BATTEN SIDING, SMOOTH FINISH, IN BOOTHBAY BLUE WITH ALUMINIUM FLASHING, COLOUR MATCHED TO BOOTHBAY BLUE
- 5

VERTICAL BOARD & BATTEN SIDING, SMOOTH FINISH, IN ASHWOOD MOSS WITH ALUMINIUM FLASHING, COLOUR MATCHED TO ASHWOOD MOSS
- 6

VERTICAL BOARD & BATTEN SIDING, SMOOTH FINISH, IN GREY SLATE WITH ALUMINIUM FLASHING, COLOUR MATCHED TO GREY SLATE
- 7

CORRUGATED METAL ACCENT SIDING
- 8

CHAM CLAD 6" SIDING IN 'TOFINO' (REF. ELEVATIONS FOR ORIENTATION)
- 9

CHAM CLAD 6" SOFFIT IN 'TOFINO'
- 10

PICKETED GAUDDRAILS, ALUMINIUM FRAME, IN WHITE
- 11

FROSTED TEMPERED GLASS GUARDRAIL WITH ALUMINIUM FRAME, IN WHITE
- 12

ALUMINIUM CAP AND TRIM FLASHING, IN GREY SLATE
- 13

FASCIA BOARD, IN GREY SLATE
- 14

VINYL FRAME WINDOW, IN WHITE
- 15

VINYL SWING DOOR IN WHITE WITH TEMPERED GLASS: PANEL AND SIDELIGHT
- 16

VINYL SWING DOOR IN IWHITE WITH TEMPERED GLASS PANEL
- 17

2 PANEL, VINYL, SLIDING TEMPERED GLASS DOOR, IN WHITE
- 18

OVERHEAD GARAGE DOOR, IN GREY SLATE
- 19

METAL SWING DOUBLE DOOR, COLOUR MATCHED TO ARCTIC WHITE
- 20

METAL SWING DOUBLE DOOR, COLOUR MATCHED TO IRON GREY
- 21

METAL SWING DOUBLE DOOR, COLOUR MATCHED TO BOOTHBAY BLUE
- 22

METAL SWING DOUBLE DOOR, COLOUR MATCHED TO ASHWOOD MOSS
- 23

WOOD TRIM PIECE, 3.5", COLOUR MATCHED TO GREY SLATE
- 24

SHINGLE ROOFING, IN ESTATE GREY

TOFINO
SOFFIT, SIDING

8 & 9

GREY SLATE

6, 12, 13, 18 & 23

ARCTIC WHITE
LAP SIDING

1

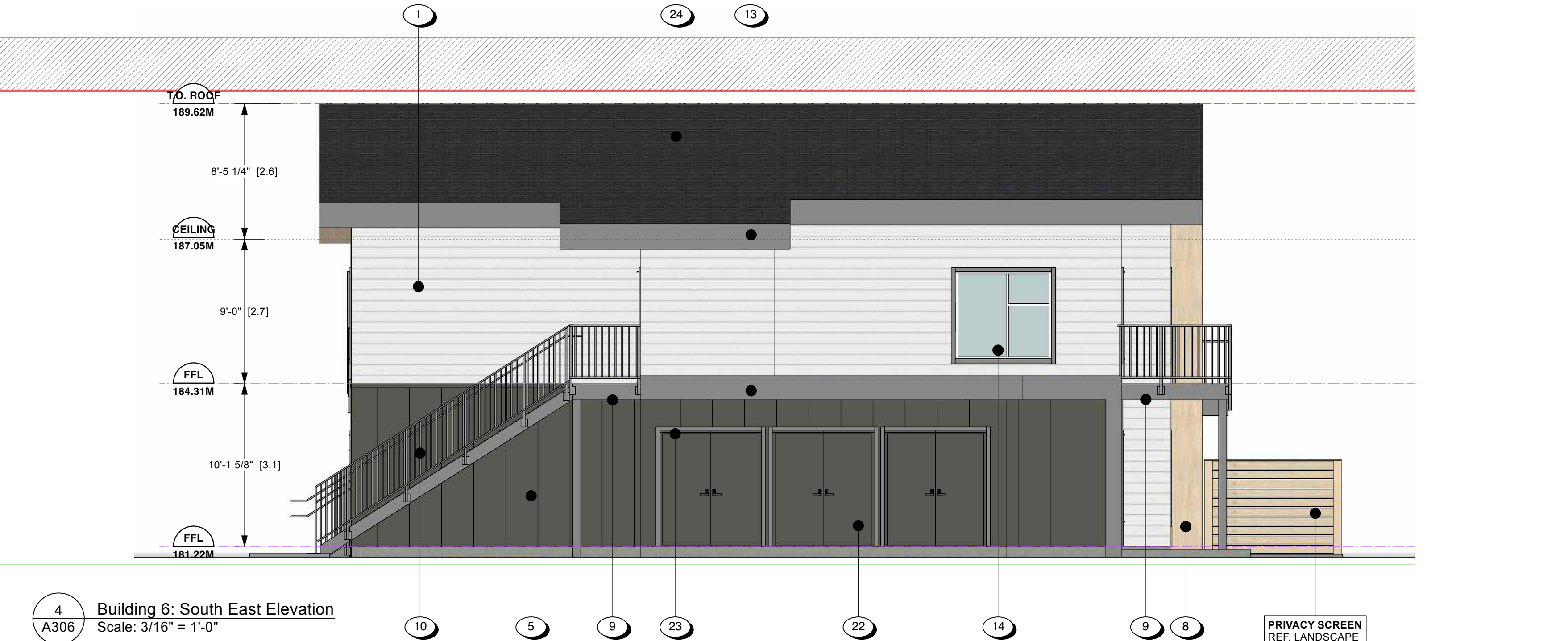
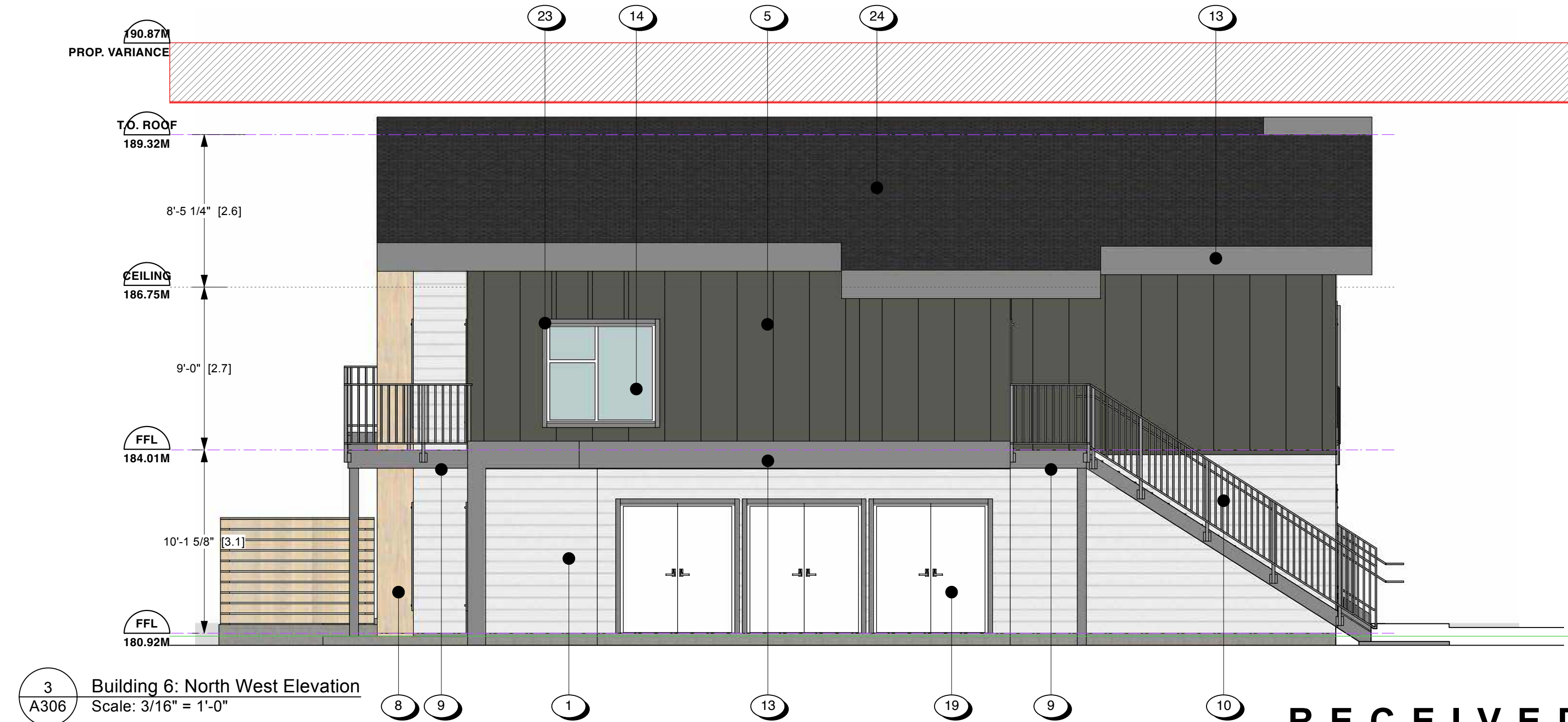
ASHWOOD MOSS
SMOOTH VERTICAL SIDING

5



BUILDING 6

STYLE 3



RECEIVED

DP1401

2025-OCT-03

Current Planning

Elevations: Building 6

A306
Scale as Noted



Mount Benson Developments
Nanaimo, B.C.
24JUL25

Lot 1 - 5420 Altavista Drive
ISSUE FOR DEVELOPMENT PERMIT

MATERIAL PALETTE

- 1

FIBRE CEMENT LAP SIDING, SMOOTH FINISH, IN ARCTIC WHITE WITH ALUMINIUM FLASHING, COLOUR MATCHED TO ARCTIC WHITE
- 2

FIBRE CEMENT LAP SIDING, WOOD GRAIN FINISH, IN IRON GREY WITH ALUMINIUM FLASHING, COLOUR MATCHED TO IRON GREY
- 3

VERTICAL BOARD & BATTEN SIDING, SMOOTH FINISH, IN ARCTIC WHITE WITH ALUMINIUM FLASHING, COLOUR MATCHED TO ARCTIC WHITE
- 4

VERTICAL BOARD & BATTEN SIDING, SMOOTH FINISH, IN BOOTHBAY BLUE WITH ALUMINIUM FLASHING, COLOUR MATCHED TO BOOTHBAY BLUE
- 5

VERTICAL BOARD & BATTEN SIDING, SMOOTH FINISH, IN ASHWOOD MOSS WITH ALUMINIUM FLASHING, COLOUR MATCHED TO ASHWOOD MOSS
- 6

VERTICAL BOARD & BATTEN SIDING, SMOOTH FINISH, IN GREY SLATE WITH ALUMINIUM FLASHING, COLOUR MATCHED TO GREY SLATE
- 7

CORRUGATED METAL ACCENT SIDING
- 8

CHAM CLAD 6" SIDING IN 'TOFINO' (REF. ELEVATIONS FOR ORIENTATION)
- 9

CHAM CLAD 6" SOFFIT IN 'TOFINO'
- 10

PICKETED GAUDDRAILS, ALUMINIUM FRAME, IN WHITE
- 11

FROSTED TEMPERED GLASS GUARDRAIL WITH ALUMINIUM FRAME, IN WHITE
- 12

ALUMINIUM CAP AND TRIM FLASHING, IN GREY SLATE
- 13

FASCIA BOARD, IN GREY SLATE
- 14

VINYL FRAME WINDOW, IN WHITE
- 15

VINYL SWING DOOR IN WHITE WITH TEMPERED GLASS: PANEL AND SIDELIGHT
- 16

VINYL SWING DOOR IN IWHITE WITH TEMPERED GLASS PANEL
- 17

2 PANEL, VINYL, SLIDING TEMPERED GLASS DOOR, IN WHITE
- 18

OVERHEAD GARAGE DOOR, IN GREY SLATE
- 19

METAL SWING DOUBLE DOOR, COLOUR MATCHED TO ARCTIC WHITE
- 20

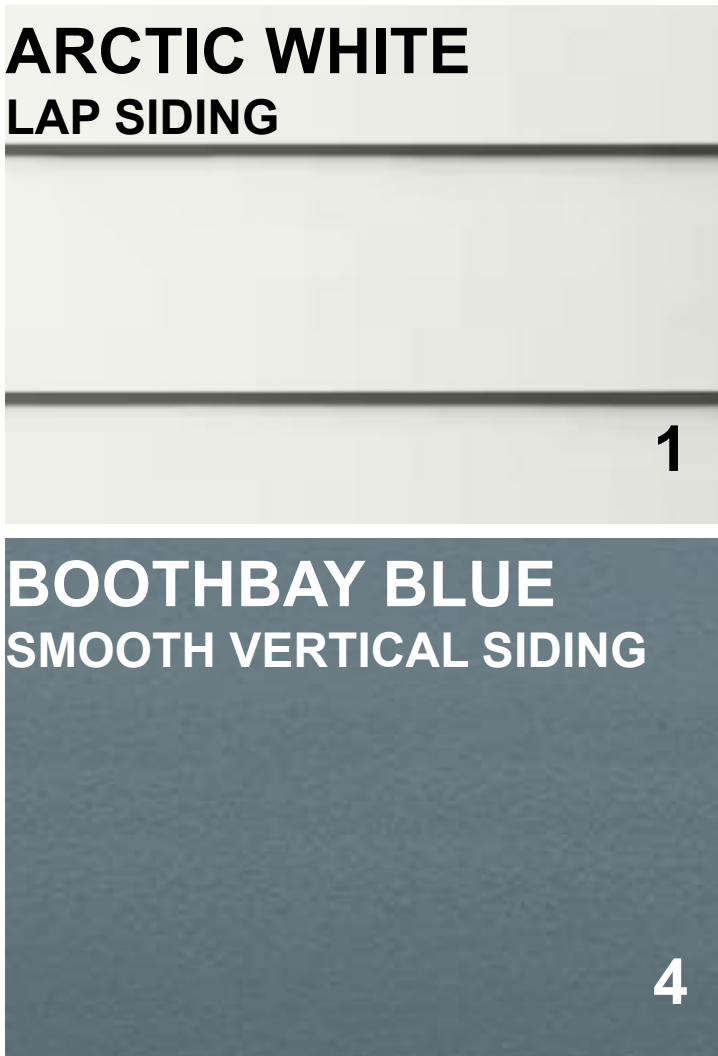
METAL SWING DOUBLE DOOR, COLOUR MATCHED TO IRON GREY
- 21

METAL SWING DOUBLE DOOR, COLOUR MATCHED TO BOOTHBAY BLUE
- 22

METAL SWING DOUBLE DOOR, COLOUR MATCHED TO ASHWOOD MOSS
- 23

WOOD TRIM PIECE, 3.5", COLOUR MATCHED TO GREY SLATE
- 24

SHINGLE ROOFING, IN ESTATE GREY



BUILDING 7

STYLE 2



RECEIVED
DP1401
2025-OCT-03
Current Planning

Elevations: Building 7
A307
Scale as Noted



Mount Benson Developments
Nanaimo, B.C.
24JUL25

Lot 1 - 5420 Altavista Drive
ISSUE FOR DEVELOPMENT PERMIT

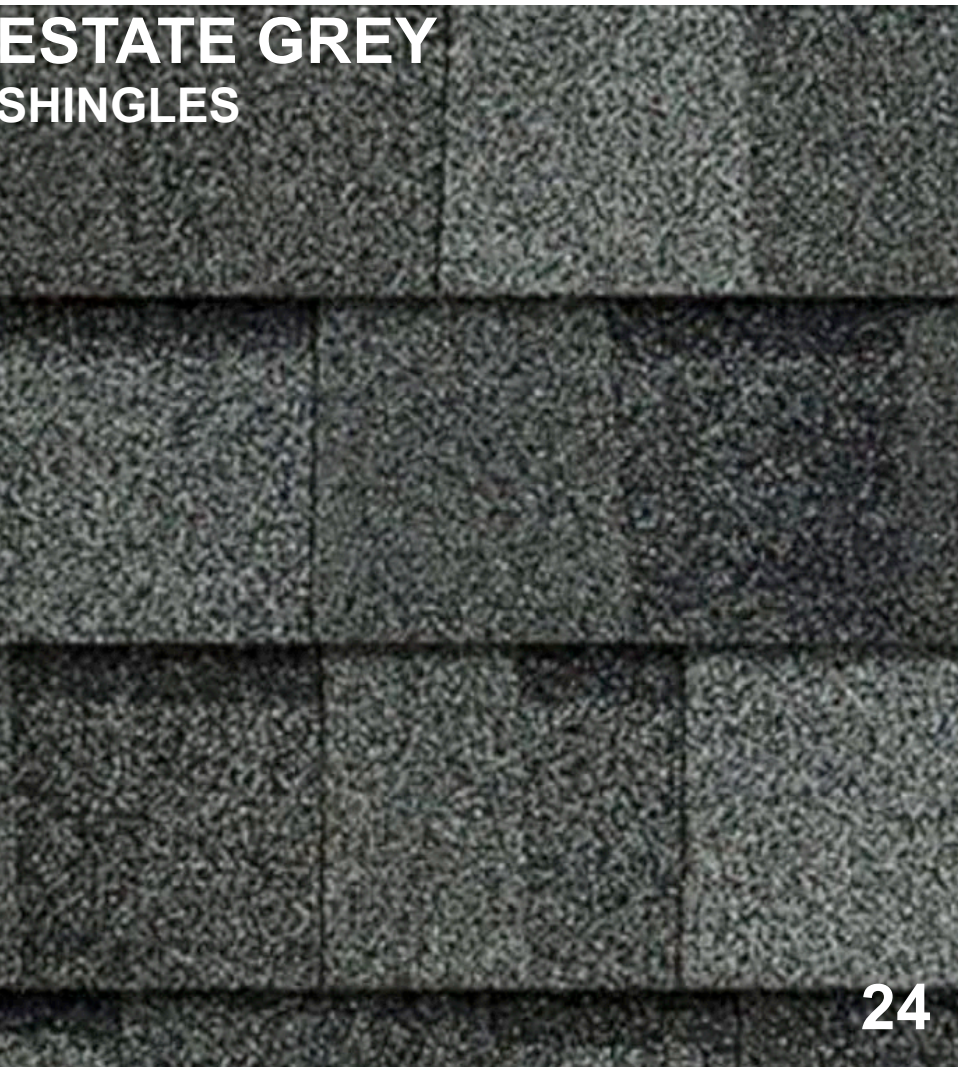
STYLE 1



STYLE 2



STYLE 3



MATERIAL PALETTE

- 1 FIBRE CEMENT LAP SIDING, SMOOTH FINISH, IN ARCTIC WHITE WITH ALUMINIUM FLASHING, COLOUR MATCHED TO ARCTIC WHITE
- 2 FIBRE CEMENT LAP SIDING, WOOD GRAIN FINISH, IN IRON GREY WITH ALUMINIUM FLASHING, COLOUR MATCHED TO IRON GREY
- 3 VERTICAL BOARD & BATTEN SIDING, SMOOTH FINISH, IN ARCTIC WHITE WITH ALUMINIUM FLASHING, COLOUR MATCHED TO ARCTIC WHITE
- 4 VERTICAL BOARD & BATTEN SIDING, SMOOTH FINISH, IN BOOTHBAY BLUE WITH ALUMINIUM FLASHING, COLOUR MATCHED TO BOOTHBAY BLUE
- 5 VERTICAL BOARD & BATTEN SIDING, SMOOTH FINISH, IN ASHWOOD MOSS WITH ALUMINIUM FLASHING, COLOUR MATCHED TO ASHWOOD MOSS

- 6 VERTICAL BOARD & BATTEN SIDING, SMOOTH FINISH, IN GREY SLATE WITH ALUMINIUM FLASHING, COLOUR MATCHED TO GREY SLATE
- 7 CORRUGATED METAL ACCENT SIDING
- 8 CHAM CLAD 6" SIDING IN 'TOFINO'
- 9 CHAM CLAD 6" SOFFIT IN 'TOFINO'
- 10 PICKETED GAURDRAILS, ALUMINIUM FRAME, IN WHITE
- 11 FROSTED TEMPERED GLASS GUARDRAIL WITH ALUMINIUM FRAME, IN WHITE
- 12 ALUMINIUM CAP AND TRIM FLASHING, IN GREY SLATE
- 13 FASCIA BOARD, IN GREY SLATE
- 14 VINYL FRAME WINDOW, IN WHITE

- 15 VINYL SWING DOOR IN WHITE WITH TEMPERED GLASS: PANEL AND SIDELIGHT
- 16 VINYL SWING DOOR IN IWHITE WITH TEMPERED GLASS PANEL
- 17 2 PANEL, VINYL, SLIDING TEMPERED GLASS DOOR, IN WHITE
- 18 OVERHEAD GARAGE DOOR, IN GREY SLATE
- 19 METAL SWING DOUBLE DOOR, COLOUR MATCHED TO ARCTIC WHITE
- 20 METAL SWING DOUBLE DOOR, COLOUR MATCHED TO IRON GREY
- 21 METAL SWING DOUBLE DOOR, COLOUR MATCHED TO BOOTHBAY BLUE
- 22 METAL SWING DOUBLE DOOR, COLOUR MATCHED TO ASHWOOD MOSS
- 23 WOOD TRIM PIECE, 3.5", COLOUR MATCHED TO GREY SLATE
- 24 SHINGLE ROOFING, IN ESTATE GREY